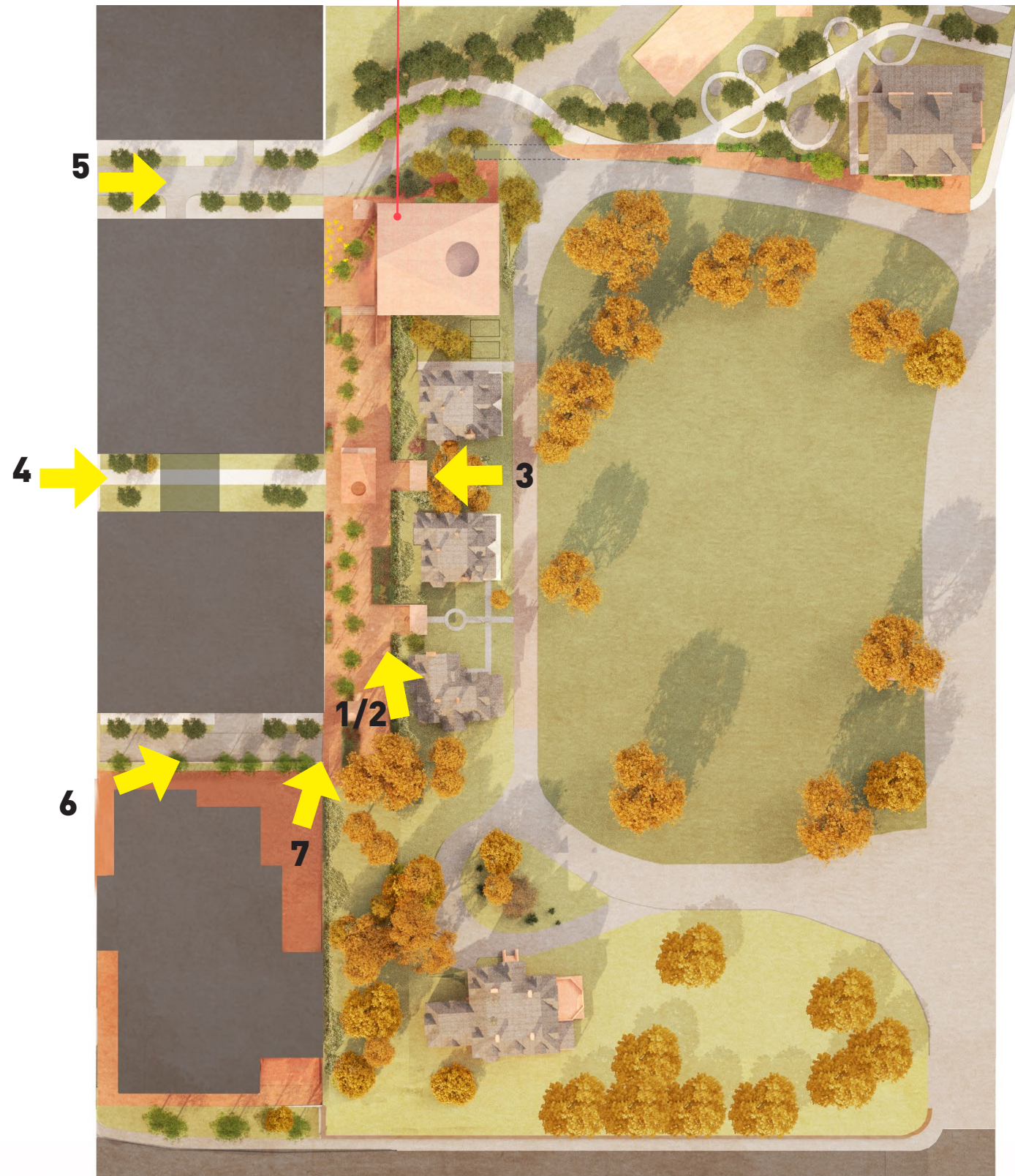


## 5.6 CREATIVITY WAY VISUALS

A plan diagram indicating a number of key visuals - as shown on the following pages - to help illustrate the public routes into Creativity Way from 6th Street.

Note: The Conservatory is a concept that is currently under review by GU and will be the subject of a future Campus Plan application.



## 5.6 CREATIVITY WAY VISUALS

A night and day-time visual illustrating Creativity Way.



1. Day-time view of Creativity Way



2. Night-time view of Creativity Way

## 5.6 CREATIVITY WAY VISUALS

A series of visuals illustrating the public benefits that Creativity Way has to offer to 6th Street and the wider neighbourhood.



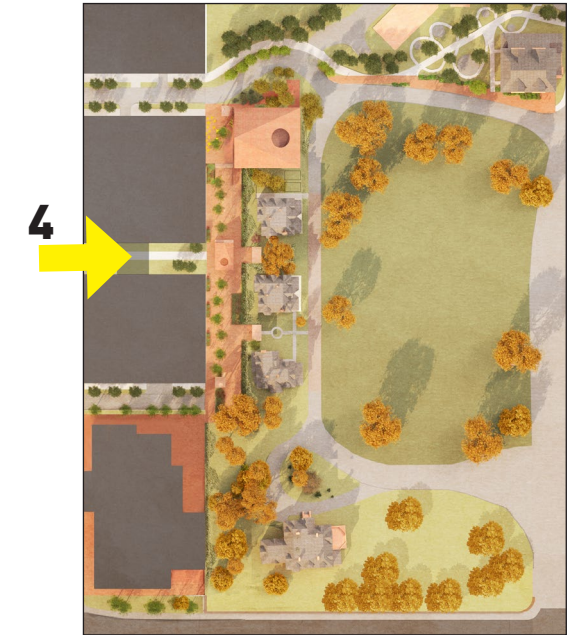
Note: Final position and detail of security lines is subject to design development

Note - this rendering represents a conceptual depiction of Creativity Way and remains subject to formal University approval and further design development.

**3.** View looking from Campus, through a Creativity Way Gateway and Pavilion to Green Finger and 6th Street.

## 5.6 CREATIVITY WAY VISUALS

A series of visuals illustrating the public benefits that Creativity Way has to offer to 6th Street and the wider neighbourhood.



**4.** A view looking towards the Pavilion on Creativity Way from the 'Green Finger' route

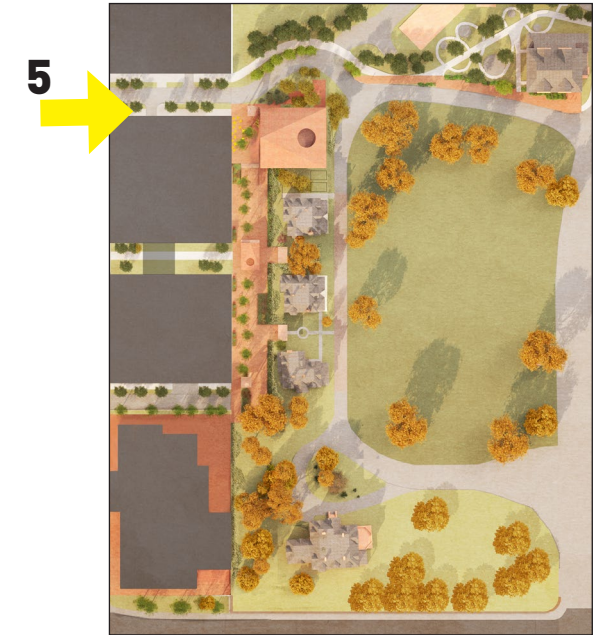
*Note - this rendering represents a conceptual depiction of Creativity Way and remains subject to formal University approval and further design development.*

## 5.6 CREATIVITY WAY VISUALS

A series of visuals illustrating the public benefits that Creativity Way has to offer to 6th Street and the wider neighbourhood.



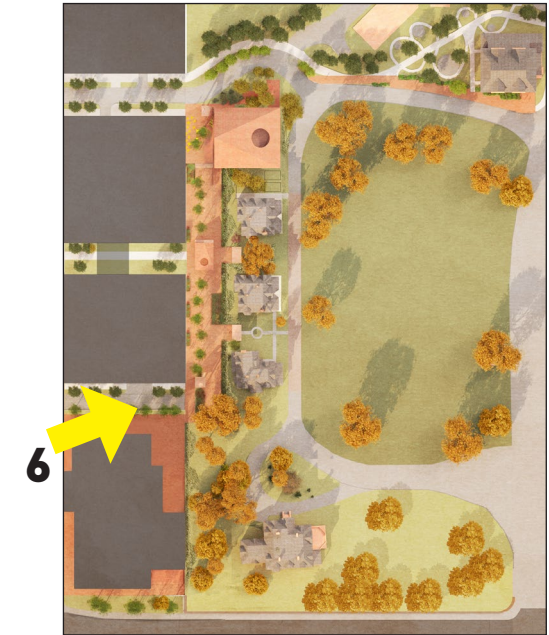
**5.** View looking towards the northern end of Creativity Way and the entrance into the Campus from Tapscott St



*Note - this rendering represents a conceptual depiction of Creativity Way and remains subject to formal University approval and further design development.*

## 5.6 CREATIVITY WAY VISUALS

A series of visuals illustrating the public benefits that Creativity Way has to offer to 6th Street and the wider neighbourhood.

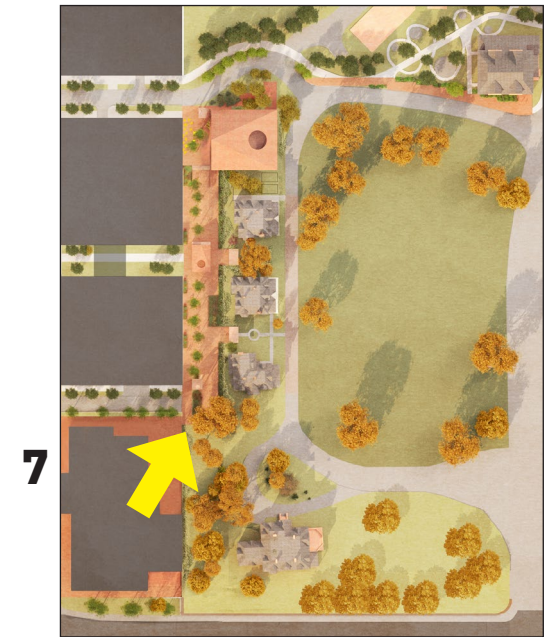
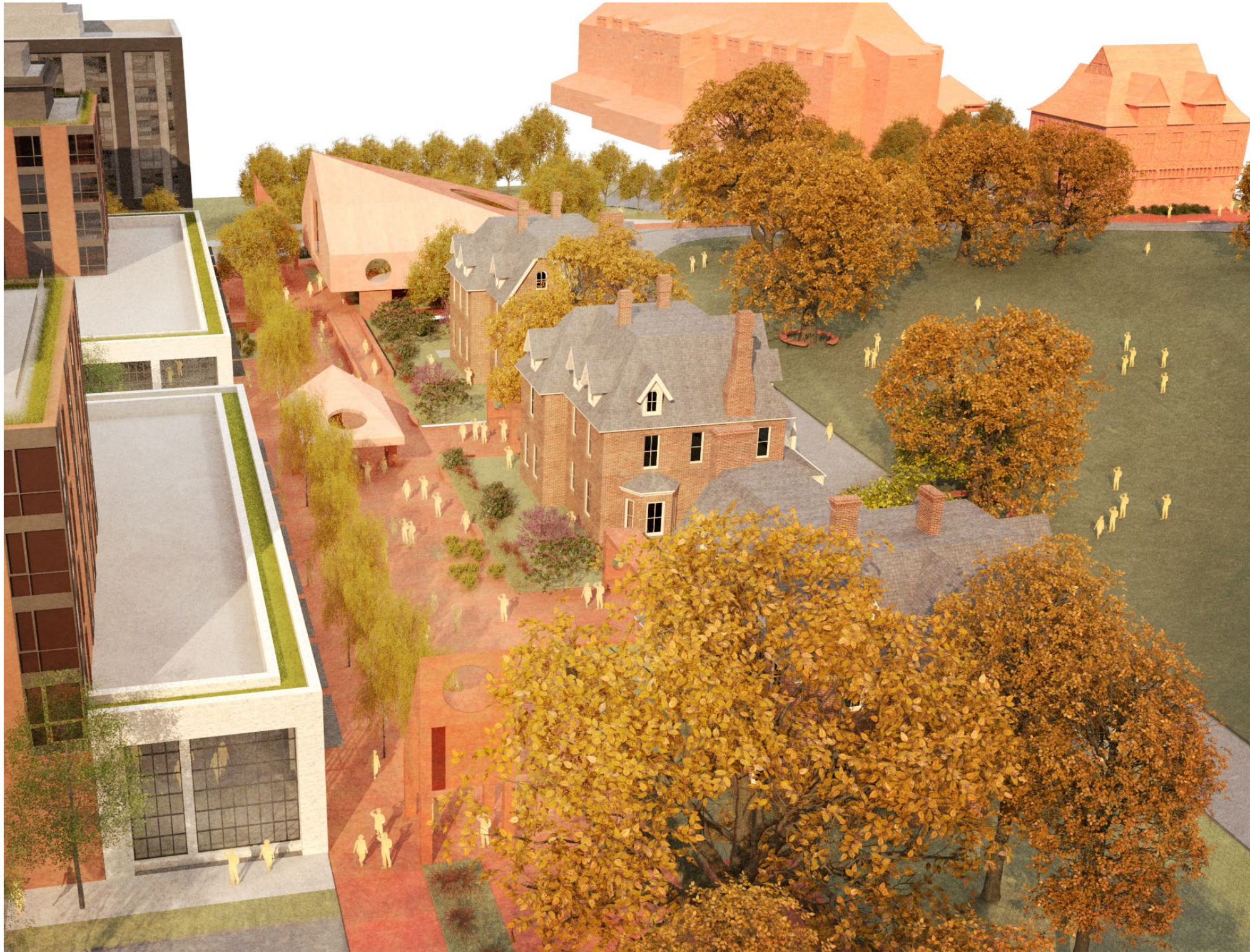


**6.** A view of the Creativity Way's entrance portal and Ballard House from the southern edge of Morse St

*Note - this rendering represents a conceptual depiction of Creativity Way and remains subject to formal University approval and further design development.*

## 5.6 CREATIVITY WAY VISUALS

A series of visuals illustrating the public benefits that Creativity Way has to offer to 6th Street and the wider neighbourhood.



**7.** An aerial view looking north along Creativity Way, from the northern edge of Parcel 1

*Note - this rendering represents a conceptual depiction of Creativity Way and remains subject to formal University approval and further design development.*